

35th Avenue North Flood Mitigation Project

Pre-construction Public Meeting

June 3, 2026

Meeting outline

1. Construction

- a) Communications plan
- b) Schedule
- c) Access
- d) Other considerations

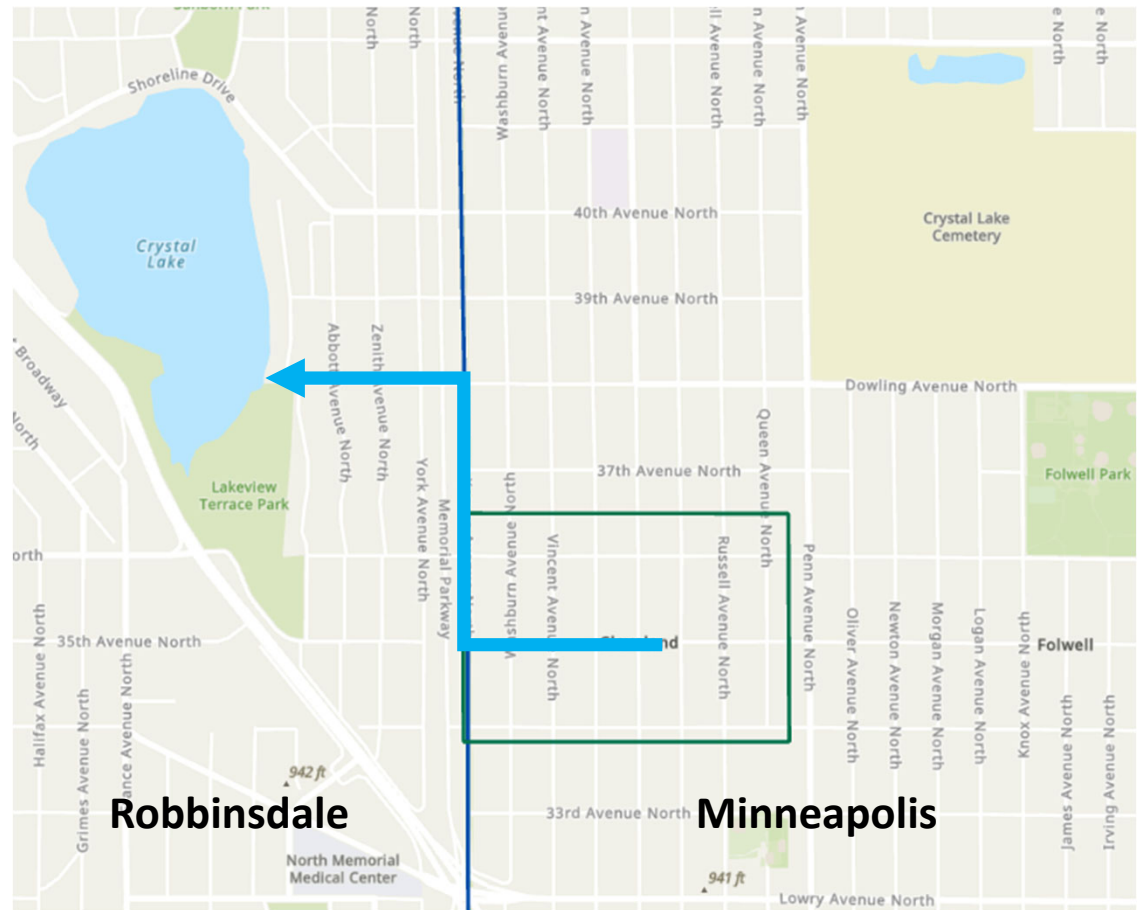
2. Green stormwater infrastructure (GSI)

3. Final street layout

4. Questions?

Project location

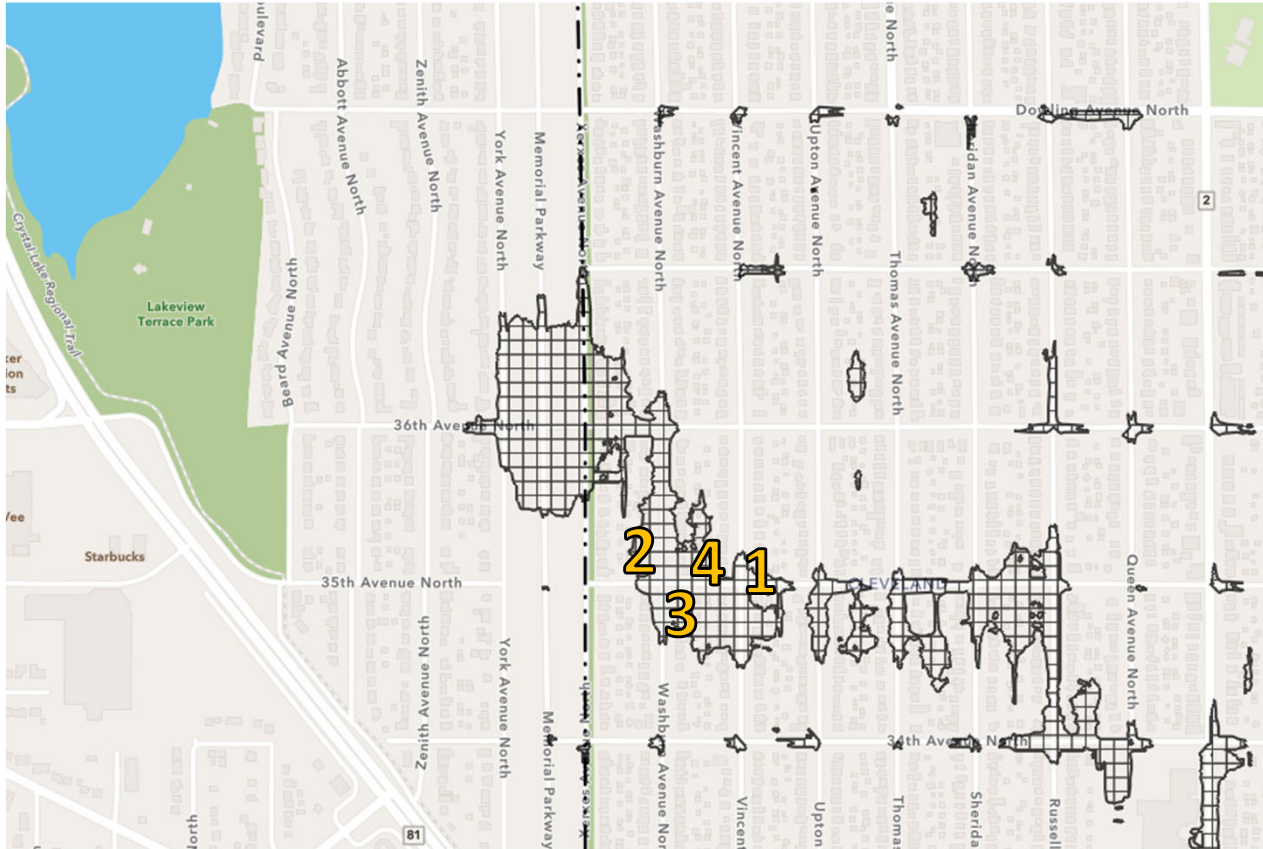
- Cleveland neighborhood
 - 34th Ave. & 35th Ave.
 - Washburn Ave. to Queen Ave.
- Upstream of Crystal Lake in Robbinsdale



Project background

- Severe, widespread flooding
- Recurring for at least three decades
- Studies identified opportunities to reduce flooding
- Flood mitigation project
 - Increase storm sewer and inlet capacity
 - Replace aging sewer pipes
 - Add green stormwater infrastructure
 - Add traffic calming
- MPCA stormwater resilience implementation grant recipient

Project background



June 25, 2025
~3.25" in 6 hours



Last updated 6/3/2026

Communications plan

- Fact sheet
- Webpage updates and email newsletters
- Door hangers
- On-site office hours
- Staff contacts

Communications plan

- Fact sheet
- Webpage updates and email newsletters
 - Block closure notifications 2-4 weeks in advance
 - Progress updates
 - Weekly to start, adjust frequency as needed
- Door hangers
- On-site office hours
- Staff contacts

Communications plan

- Fact sheet
- Webpage updates and email newsletters
- Door hangers
 - Temporary water shutoff notifications 48 hours in advance
- On-site office hours
- Staff contacts

Communications plan

- Fact sheet
- Webpage updates and email newsletters
- Door hangers
- On-site office hours
 - Monthly in 2026
 - Adjust frequency as needed in 2027
 - Brief progress update and discuss construction concerns
- Staff contacts

Communications plan

- Fact sheet
- Webpage updates and email newsletters
- Door hangers
- On-site office hours
- Staff contacts
 - Matt Allie – 612-673-2419, matthew.allie@minneapolismn.gov
 - Cody Gartman – 612-673-2728, cody.gartman@minneapolismn.gov

Construction schedule

- 2026 – starting in July
 - 35th Avenue N sanitary sewer
- 2027
 - 36th Avenue N
 - Washburn Avenue N
 - 35th Avenue N
 - Russell Avenue N
 - 34th Avenue N
- Spring 2028
 - Restoration (grass seeding and touch up work)

Access during construction

- Property access

- No parking within construction limits
- Alleys – at least one end open at all times

- Detours

- Marked street detours



City services during construction

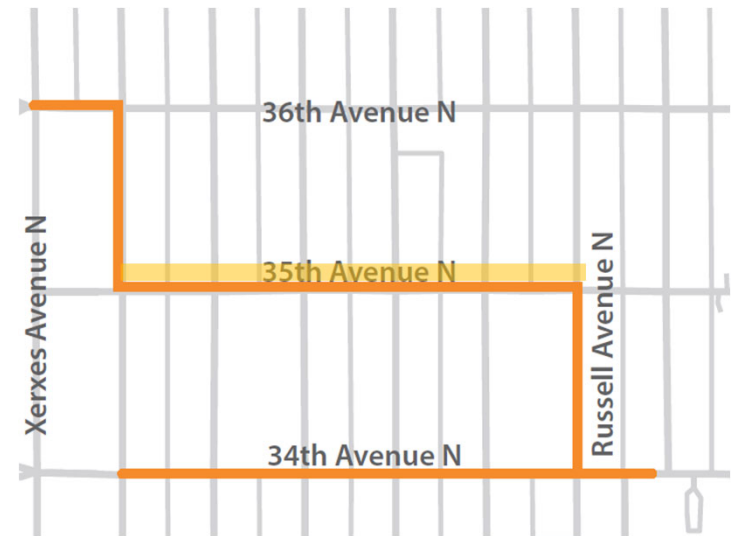
- Regular solid waste and recycling collection
- Regular snow removal
- Water service
 - Some addresses will experience temporary, short-term shut offs
 - Advance notice will be given

Construction preparations

- Pre-construction condition survey
 - Street pavement
 - Existing retaining walls
 - Post-construction inspection comparison
- MPRB will perform tree pruning on 34th and 35th Ave
- Contractor will place tree protection markings

Construction preparations

- Residents remove items to be saved from boulevard
 - Including, but not limited to: planters, plants, landscaping, rocks, signs, or decorative items
- Before July 13, 2026
 - North side of 35th Ave
- Before March 1, 2027
 - 36th Ave
 - Washburn Ave
 - South side of 35th Ave
 - Russell Ave
 - 34th Ave



Construction scope



Construction easements

- Temporary construction easements at some addresses
 - Only if necessary
 - Pedestrian ramp grading
 - Water or sewer service reconnections
 - Ground restored after work

Green Stormwater Infrastructure

- Why GSI?
 - City ordinance guiding stormwater management
 - Aligns with clean water standards
 - Commitment to protecting surface waters
 - When it rains, runoff carries pollutants
- What is GSI?
 - Built landscape that mimics nature
 - Swale or basin for water to collect in
 - Well draining soil
 - Healthy vegetation with deep roots
 - Filters out pollutants and infiltrates water



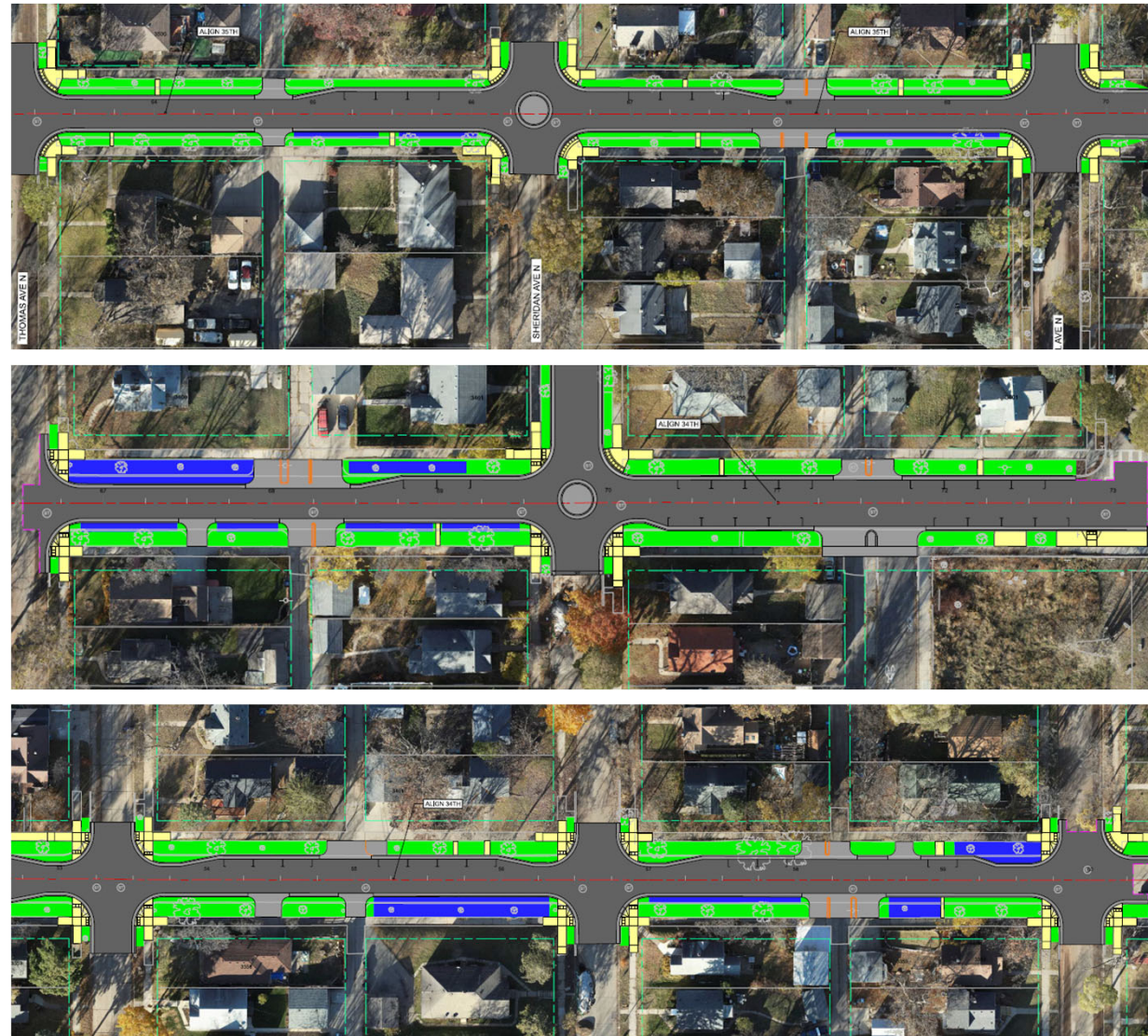
GSI purpose & benefits

- Keeps our surface waters clean
- Helps reduce flooding
 - Infiltration reduces runoff
 - 20,152 gallons
 - ½-inch deep water covering an entire football field
- Bird and pollinator habitat
- Neighborhood greening
- Heat island reduction
- Meet city stormwater ordinance



GSI locations

- Technical feasibility:
 - Drainage patterns
 - Soil conditions
 - Tree health
- SWS maintained



GSI plantings

- Plant type feedback activity
- Grasses & sedges:



- Potential community planting event
- Forbs:



Final street layout

- Reduces pavement area
- Preserves trees
- Preserves some parking on 34th & 35th Avenues
- Calms traffic
- ADA improvements to pedestrian ramps

Final street layout

- Reduces pavement area
 - Runoff reduction – 25,709 gallons
 - $\frac{3}{4}$ -inch deep water covering an entire football field
- Preserves trees
- Preserves some parking on 34th & 35th Avenues
- Calms traffic
- ADA improvements to pedestrian ramps

Final street layout

- Reduces pavement area
- Preserves trees
 - 189 total trees
 - Remove and replace 14 trees
- Preserves some parking on 34th & 35th Avenues
- Calms traffic
- ADA improvements to pedestrian ramps

Final street layout

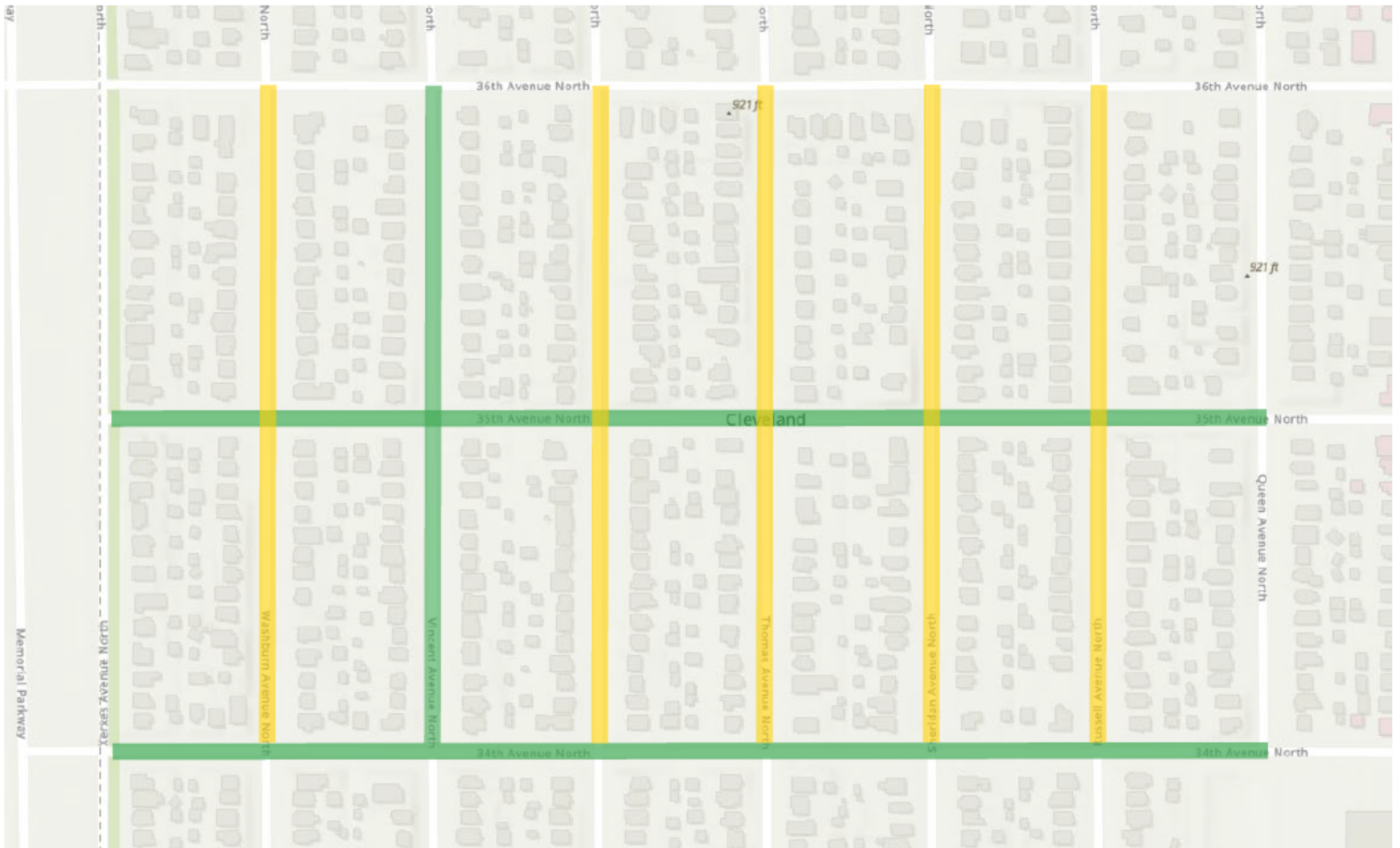
- Reduces pavement area
- Preserves trees
- Preserves some parking on 34th & 35th Avenues
 - Parking study
 - Tuesday, Wednesday, Thursday, Saturday mornings before 6:00 am
 - Thursday evening after 6:00 pm
 - 34th and 35th Avenues – below 20% usage
 - North-south avenues – below 35% usage
 - Parking bays, north side of street – engagement feedback
 - Street parking spaces per home decreases from 2.7 to 2.3
- Calms traffic

Parking usage

PARKING UTILIZATION

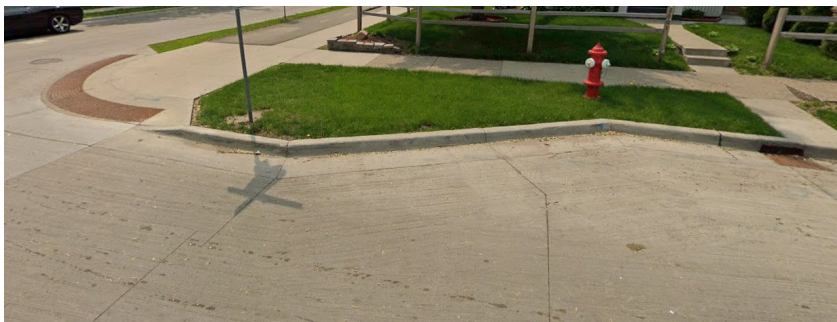
5-20%

20-35%



Final street layout

- Reduces pavement area
- Preserves trees
- Preserves some parking
- Calms traffic
 - Curb bump outs
 - Traffic circles
 - Narrower streets



Questions or comments?

- Matt Allie, City Project Manager
matthew.allie@minneapolismn.gov